

## encom<sup>♦</sup>discover version 9.0 release notes



The release of Discover 9.0 continues the tradition of major improvements to Encom's popular desktop GIS for geoscientists and supports the release of MapInfo Professional 9.0 and Microsoft Windows Vista. Have a close look at the completely new PolyBuilder tool which is a major feature of this latest release.

### Systems Compatibility

New systems support includes:

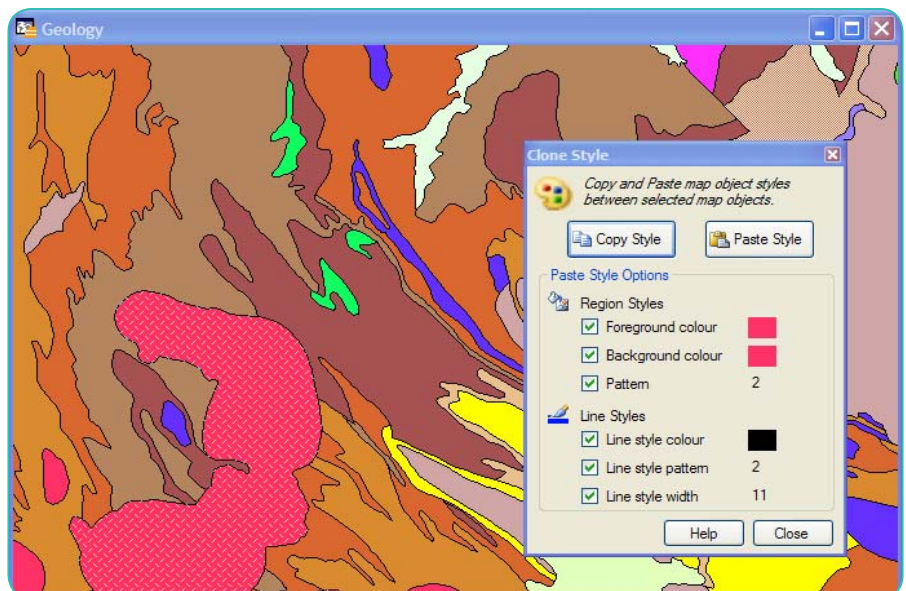
- Windows Vista compatibility
- MapInfo Professional 9.0 compatibility
- acquire 4.0.3 compatibility (latest acquire API included)
- Regional settings support (allows display of decimal points as commas)

### Style Cloner

This new utility enables the map object style to be copied from a selected point, line or polygon and applied to a new map window selection. It is simple to use, like cut and paste, and a great time-saver.

### Dynamic Scalebar

This new utility creates a scalebar in a separate window which is updated dynamically to always show the scale of the active map window. Further, you can produce a static scalebar object that can be added as new layer in the map window.



## GraphMap

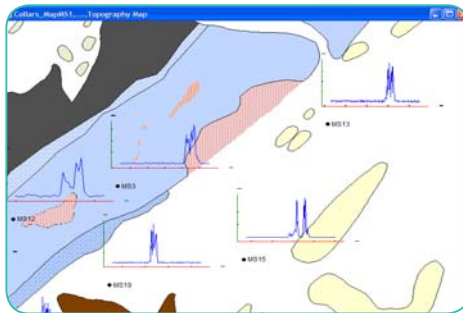
Discover's interactive graphical environment for data exploration has been further enhanced by the following changes:

- Support for time/date field types
- Performance improvements

You can use the new time/date field support for temporal analysis of data.

### Geolocated Graphs

This new graph option produces individual graphs next to the geographical locations from which the data was collected (eg. scatterplots of downhole assays next to collar locations, total dissolved solid plots next to monitoring bores). These graphs can also be exported to a MapInfo Professional map window.



## DXF Import

Discover 9.0 provides improved import of this common data format. New features include:

- The option to split DXF layers into separate tab files
- A new progress bar and cancel option
- Improved support for AutoCAD 2006 files

## Surfaces

Discover 9.0 provides two new grid utilities.

### Grid Statistics to Object

This new utility computes a range of statistical parameters for any vector object (point, line or polygon) that is geographically coincident with a selected grid file. The utility inspects the grid cells underlying each object and returns a set of statistical parameters.

Depending on the object type these can include: number of cells, number of valid cells, number of null cells, minimum, maximum, mean, range, standard deviation, sum and percentage of null cells.

This tool can help you perform advanced terrain and geochemical analysis.

### 3D Vector to Grid

This new tool directly converts a 3D vector file to a gridded surface. Supported input formats include 3D DXF, Gemcom BT2, ESRI TIN, GoCAD vector, Surpac DTM, Datamine wireframes and Vulcan triangulation files. This tool is primarily used for triangulated terrain surfaces.

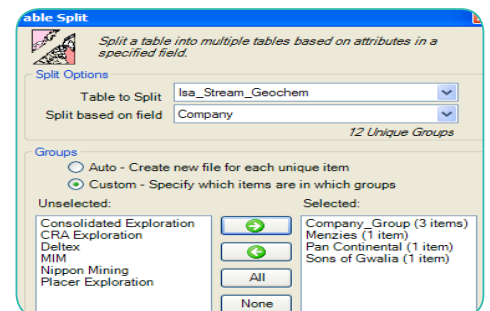
Other improvements to the Surfaces module in Discover 9.0 include:

- Minex grid format export added
- Gridding parameters are now saved in an XML file for later reference and use
- New categorised Projection Chooser dialog for ER Mapper grids
- Improved numerical precision when gridding sub-metre data

## Data Utilities

Data utility improvements include:

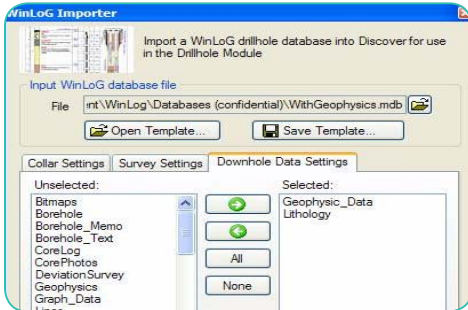
- Select by Group function now allows entry of a query name
- Data Normalizing option now links to Geochem Levelling utility
- New option in Table Split utility to select multiple unique attributes in a field and split each to a new output table



## Drillholes

### WinLoG Import Wizard

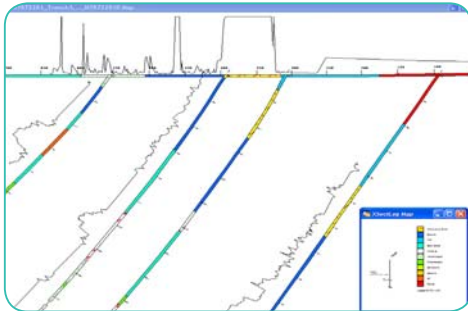
Discover 9.0 provides the ability to import a WinLoG database directly into a Discover drillhole project.



### Trenching Tool

Discover can now handle trench/costeans that have an inclination or dip attribute in the survey file. Therefore, trenches captured as a series of distance, azimuth and dip measurements can be easily and accurately displayed in either plan or cross-section views. Other options include:

- Assign an order field for survey measurements
- Choose segment length or cumulative distance for survey measurements



Discover 9.0 also includes improvements for drillhole displays where the datasets contain negative values.

## PolyBuilder

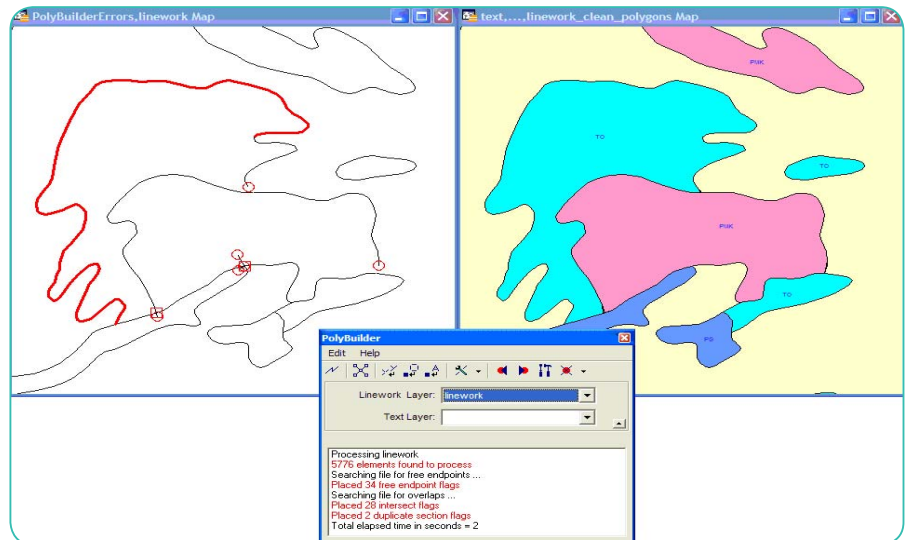
This major new module enables complex linework to be digitised and/or cleaned prior to creating polygons. It includes options to break, extend and join linework, plus attribute newly created polygons using an associated annotation table.

The Discover PolyBuilder utility is designed to simplify the conversion of digitized linework (representing regions) into polygon vector objects. A common use is the digitization of lithological units or land use areas from a scanned and georeferenced image (e.g. open file report) as series of lines or polylines. This linework dataset is then converted into an attributed dataset of polygon regions.

3. Create Polygons  
All cleaned line segments that enclose an area are joined together, creating polygons.
4. Attribute Polygons  
Once polygons have been created, they can be attributed using text located within the polygons.

The PolyBuilder utility also provides the following tools:

- Digitize Linework  
The digitizing utility allows source linework to be created from scratch. This tool enables the storage of feature line styles to aid in consistent data capture. It also allows features



Map window on left showing flagged errors including duplicate lines, intersections and free end points. Map window on right showing completed polygons.

The PolyBuilder process uses the following functionality:

1. Check Linework  
In order to create polygons from linework datasets, the linework must be free of any lines which are duplicated, extend past or fall short of other lines. This tool “flags” all such errors.
2. Correct Linework  
The linework dataset is then “cleaned”, removing all identified errors. All the overlapping linework is broken down into individual line segments. This tool can be run in either an automated and manual mode.

to be added as attributes during the linework creation process.

- Additional Linework Utilities  
In addition to the streamlined PolyBuilder process tools (above), additional tools to break, join and filter linework datasets can be run separately.

## Advanced ASCII Import

This powerful and time-saving data import tool now includes:

- Support for Date/Time fields (requires MapInfo Professional 9.0)
- An option to ignore specific characters on import
- Improved support for importing Longitude/Latitude data

In addition, setting the default column type for X,Y,Z no longer changes the column name.

## Geochem

The Geochem Data Levelling utility now supports data fields (columns) that are of type text but contain numeric information. It also has improved handling of detection limits and null values.

## Map Making

Changes to existing map production tools include:

- Scaled Output: new option to show the title block frame border
- Add Text Labels: Verify button added to the expression builder
- Added ability to sort the description field in the Legend Editor

## Map Window

The Convert Map to Registered Raster function now supports GeoTIFF output (requires MapInfo Professional 9.0).

## Tenement Applications

Added ability to produce text file containing selected blocks and sub-blocks (Australia Only).

## Configuration

Discover 9.0 provides an option to store configuration files in one of three locations - All Users path, Current User path or Custom path.

## Autosave

Autosave Workspace setting now defaults to 5 minutes.

## Requirements

Encom Discover 9.0 requires MapInfo Professional 7.8 to 9.0, with Windows 2000, XP or Vista.

## Contact Tetrad Computer Applications

### United States:

3873 Airport Way, Box 9754

Bellingham, WA 98227-9754

Tel: 360-734-3318 Fax: 360-734-4005

Toll free: 1-800-663-1334

Email: [info@tetrad.com](mailto:info@tetrad.com)

### Canada:

1445 West Georgia St, Suite 500

Vancouver, BC V6G 2T3

Tel: 604-685-2295 Fax: 604-685-2352

Toll free: 1-800-663-1334

Email: [info@tetrad.com](mailto:info@tetrad.com)