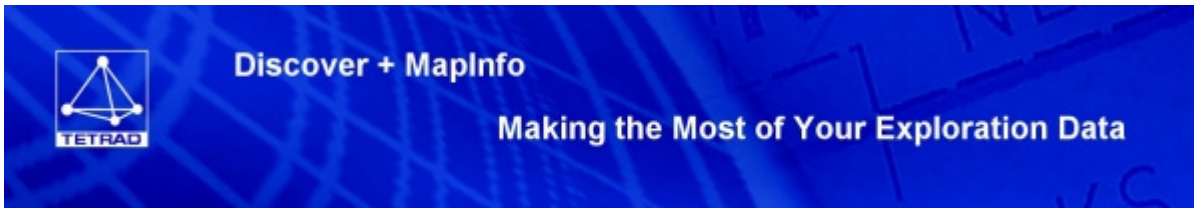


Email not displaying correctly? View it in your browser.



Discover + MapInfo

Making the Most of Your Exploration Data

encom⁺

Tetrad Geoscience Newsletter

January 2009

SEE YOU AT THE MINERAL EXPLORATION ROUNDUP 2009 IN VANCOUVER

Cindy Collins will be in the Encom MapInfo booth C22 on the second floor Monday, January 26th and Tuesday, January 27th. Stop by to see Discover 3D in action.

MapInfo and Discover Training for Geologists Preceding Roundup 2009

Maximize your time and software investment through training designed to provide geologists with an overview of the product capabilities and a thorough understanding of many features.

Click the following for course description and online registration:

- [Introduction to MapInfo & Discover](#)
- [Intermediate MapInfo & Discover](#)
- [Discover 3D](#)

Discover Video Demonstrations

These videos have been produced to show how Discover is easy to use.

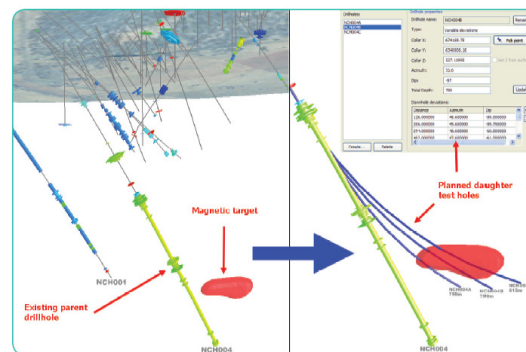
3 Ways to Reduce Your Drilling Budget

Geologists use 3D software to visualize and plan drilling activity.

Encom Discover 3D v4 for MapInfo and Discover v10 features tools to aid in planning by integrating multiple data types for visualization and application of varied analytical techniques. The tools include 3D drawing and editing, voxel, threshold and isosurface modeling and the drill hole planner tool.

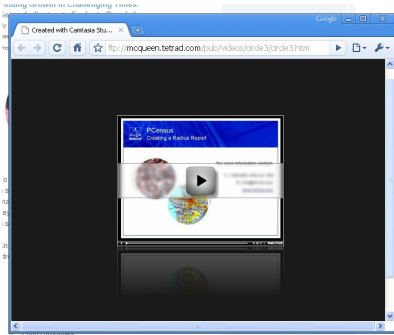
Method 1: With the **Discover 3D drill hole planner tool**, geologists can dynamically create proposed drill holes to intercept targets based on existing drilling, subsurface data and 3D visualization of existing 2D and 3D datasets...

[\(continued\)](#)



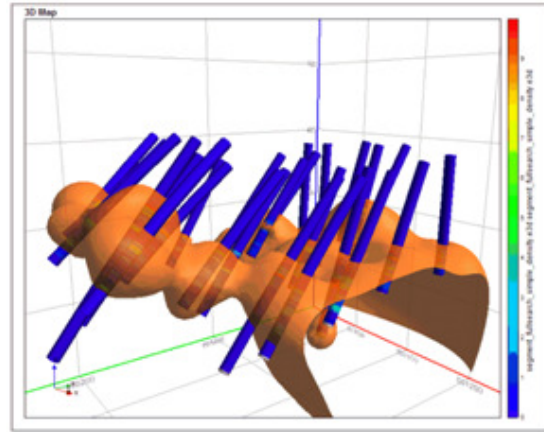
Method 2: The **Discover 3D voxel tool** can create, import and export voxel models, an interpolation of data points for output as a continuous mesh of cells in 3D... [\(continued\)](#)

- Discover 3D Overview
- Bring 2D Drill Data to 3D
- Drill Planning Tool Demonstration

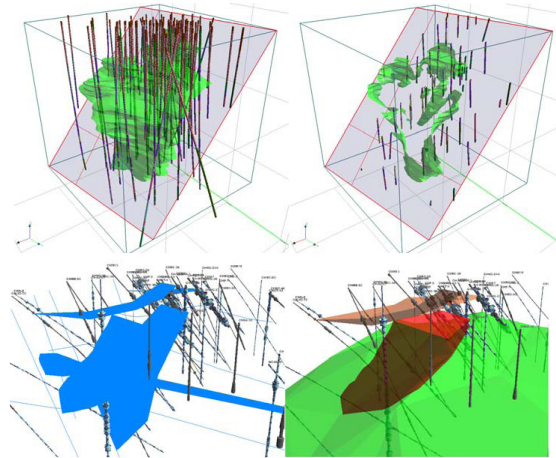


Click [Here](#) to Select a Video

For more information, contact Cindy Collins at Tetrad 800.663.1334 x314.



Method 3: Use **Discover** and **Discover 3D** to edit and draw in 3D... [\(continued\)](#)



View the Full Article [Here](#)

[contact us](#) | [view our website](#) | [remove me from this list](#) | [forward this email to a friend](#)

Cindy Collins: 800-663-1334 x314
ccollins@tetrad.com

1465 Slater Road, P.O. Box 5007
Ferndale, WA 98248-5007

1445 West Georgia St, Suite 500
Vancouver, BC V6G 2T3

Copyright (C) 2008 Tetrad Computer Applications, Inc. All rights reserved.